

The background features a black and white photograph of a basketball court, showing the wooden floor and white court lines. Overlaid on this are several green geometric shapes, including a large dark green triangle on the right and a lighter green triangle on the left, creating a modern, abstract design.

Green Class Year 5

**Curriculum & General
Information**

Staffing

Mr Adkins, Mrs Calzada and Mrs Haylor – Teachers

Mrs Davies, Mrs Clegg and Mrs Willis – Teaching Assistants

Mrs Appleton – Science and RE (PPA cover – Term 2, 4 and 6)

Mrs Willis – Art/DT Teacher (Terms 1, 3 and 5)

Mrs Salt – Spanish Teacher

Miss Brown – Sports Coach

Mrs Kirkbride – Headteacher

Mrs Vitiello – Deputy Headteacher and SENCo

Mr Adkins – KS2 Lead

Meet Our Governors



Jonathan Richardson
Chair of Governors/Local Authority Governor



Michele Kirkbride
Headteacher



Janet Harris
Co-opted Governor



Sienna Constantine
Staff Governor



Tracey Hills
Co-opted Governor

Ethelbert Road Governors



Amy Kelleher
Parent Governor



Rebecca Faithfull Quinlan
Parent Governor



Vanessa Bull
Co-opted Governor



Elaine Parkinson
Co-opted Governor



Lyn Jardine
Co-opted Governor



Siobhan Price
Co-opted Governor



Sally Stoker
Safeguarding / Co-opted Governor

Safeguarding

Safeguarding our children is a very important part of our practice and it is important that parents are confident and knowledgeable about the school's arrangements to keep their child safe. Information for parents can be found on our website under the 'Our School' tab.

<https://www.ethelbert-road.kent.sch.uk/safeguarding>

If you would like any further information or have any questions, please do not hesitate to contact Mrs. Kirkbride (Headteacher and DSL) at headteacher@ethelbert-road.kent.sch.uk



Are you worried about a child in our school?

Safeguarding is everyone's responsibility

If you are concerned about a child in our school, please speak to someone today.

Staff should always act in the best interests of the child. Don't assume that a colleague or another professional will [take action](#) if you have any concerns about a child's welfare act on them immediately.

Safeguarding Governors

Sally Stoker
David Haigh

Our Safeguarding Team

 Mrs Kirkbride Headteacher	 Mrs Vitello Deputy/SENCO	 Mrs Cornell Mental Health and Wellbeing	 Mrs Rix Early Years
--	---	--	--

ANY concerns regarding the safety or well-being of any child in the school will be recorded by staff on CPOMS. Visitors or volunteers must speak to one of the Designated Safeguarding Lead (DSL) if they have any concerns. All concerns about staff, parents, governors, visitors and volunteers should be brought to the Headteacher's attention straight away.

In the event of an emergency or if the above staff are not contactable, please ring the following numbers for advice or consultation.

Area Safeguarding Adviser – 030004185503
Central Duty Team – 03000 411111 (out of hours 03000 419191)

Education Safeguarding Service

Kent County Council

School rules



BE SAFE



BE KIND



BE READY

Be Safe

We walk in school

We ask adults for help

We tie long hair up

We line up quietly

We are honest



We wait our turn

We keep the classroom tidy

We follow instructions

We make the right choices

Be Kind

We use kind hands

We listen to others

We use kind words

We use manners

We use kind feet

We have a caring heart

We think of others' feelings

We look after property
and the environment

We accept everyone is special



Be ready

We come to school on time

We wear our school uniform

We listen



We ask questions

We do our homework

We are curious

We have the right equipment

We take part in lessons

We have good learning behaviours

Rewards

- Each week we will decide upon something that we wish to improve. This target will be related to one of our 3 School Rules. The aim is for every child to get their name moved up on the Recognition Board by the end of the week for achieving that target.
- Throughout the week, children can also earn house points.
- Our Celebration Assembly will take place on Friday afternoons where one child will receive a Star Award Certificate for their achievement.

Expectations in year 5

As your child progresses through upper KS2, your children will be encouraged to be more and more independent.

Children will be encouraged to be responsible for their own belongings, including their pencil cases and other classroom equipment.

Pencil cases

General Content:

- Pencils (ideally including a spare for when one needs sharpening)
- Pen
- Pencil Sharpener
- Glue Stick
- Eraser
- Ruler
- Colouring Pencils



Uniform

Winter

- Purple sweatshirt, cardigan or fleece with school logo
- Yellow polo shirt with school logo
- Smart grey trousers or smart grey shorts
- Grey skirt or grey pinafore dress
- Grey, black, white or coloured socks or tights
- Sensible, easily fastened coats
- Black shoes or black flat boots (no trainers or high heeled shoes please)

P.E. Kit

- Purple hoody with school logo
- Purple T-shirt with school logo
- Black Shorts
- Black tracksuit bottoms or black leggings
- Sports trainers
- Small bag or rucksack (we have limited space so no large rucksacks please)

Summer

- Purple Sweatshirt, cardigan or fleece with school logo
- Yellow polo shirt with school logo
- Smart grey shorts or smart grey trousers
- Purple or yellow checked dresses
- Light, rain coat
- Black shoes (no trainers or high heeled shoes please) or closed-toe sandals (no crocs please)

Bookbag

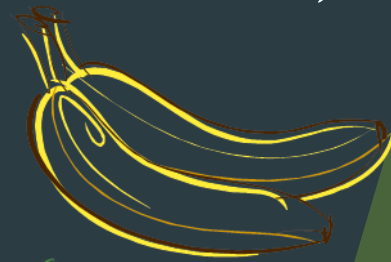
- Purple or blue bookbag, with school logo, that must fit in their tray.

- Earrings (small plain studs only)
- Hair should be tied back

Water bottle and snack

In Year 5, all children will be expected to have a water bottle in school.

The children can bring in a healthy snack. This could be a piece of fruit, dried fruit, a vegetables, a fruit roll up, healthy crackers, oatcakes, rice cakes, breadsticks or a piece of cheese.



Arrival and dismissal

- The children will enter school via the back door on the playground.
- The school gate will open at 8:35am and the main back door will be open from 8:40am. The register closes at 8.50.
- We use early morning work as time to learn key skills.
- Children need to be collected at 3.15 from the playground.
- If someone else is collecting your child, please let us know in the morning or contact the office (they will pass a message on to us) or the class email (please ensure this is the day before to allow us time to pick this up).
- If your child is going to start walking home, please let us know with an email or a letter.

Topics

These will include:

- ▶ South America
- ▶ The Amazon Rainforest
- ▶ The Battle of Britain
- ▶ A World War 2 local history study
- ▶ Journeys and trade
- ▶ Early Islamic civilisation
- ▶ All living things
- ▶ Evolution
- ▶ Light
- ▶ Electricity
- ▶ Video production
- ▶ Programming
- ▶ Creating digital media
- ▶ STEM Go Kart project

Termly curriculum maps

Maths

This term, we will be learning about place value within 1,000,000. This unit includes understanding place value, ordering, comparing and rounding.

After that, we will learn about addition and subtraction. Finally, we will begin to learn about multiplication and division.

PSHE

In PSHE, we will be discussing healthy living. We will talk about junk food, nutrients, exercise, legal drugs and how different body parts work both individually and as a team.

Spanish

In Spanish lessons the children will learn about En mi pueblo - Town and directions.

Computing

During computing sessions, we will be studying computing systems and networks, which includes learning about systems and searching.

P.E.

This term, we will be playing invasion games and learning about leadership in PE on Mondays. On Thursdays we will be going to Faversham gym.

R.E.

During RE lessons, we will be asking the question, 'What matters most to Christians and Humanists?' We will be exploring how values can impact how a person reacts and looking at some of the values that Christians follow.

English

We begin Year 6 with our shared class text: The Explorer (Katherine Rundell) which links beautifully with our topic of South America and the Amazon Rainforest. We will use this text as a springboard for creative writing as we write our own adventure story. We will also participate in a directed performance of a rainforest poem, incorporating pitch, volume, pace, expression and actions to convey meaning.



Subject Specific Vocabulary

Geography: rural, urban, urbanisation, favela, poverty, Amazon River, Amazon Rainforest, inequality, deforestation, indigenous, continent, Brasilia, Rio de Janeiro, Manaus, rainfall, climate, equator, hemisphere, migration, data, push/pull factors.

Magical moments: Trip to Wingham Wildlife park.

Art and DT

We begin Year 5 with a focus on the post-impressionist painter Henri Rousseau. We will explore his painting 'Surprised' and then, inspired by his style, we will produce our own watercolour painting. We will also experiment with shades, tints and tones of green to create a rainforest classroom display.



Music

Our music unit is based upon Época by The Gotan Project. The children will get to know Época and explore the history of Argentine tango. They will also explore the accordion, bass and drum kit.

Science

During Term 1, we will be learning about living things and their habitats. We will learn how to classify things in to broad groups based on observable characteristics. We will also consider the reasons for classifying different animals and plants.

Geography

Our topic focus for this term will be a study of South America and the Amazon Rainforest. We will explore the human and physical geography of the region, and investigate the story of migration and population distribution in Brazil. We will end the topic by making comparisons with population distribution in the UK.

The termly map identifies the specific topics that we will cover for the different subjects during each term and is available on our class page.

It can be found via the curriculum link.

<https://www.ethelbert-road.kent.sch.uk/curriculum-35/>

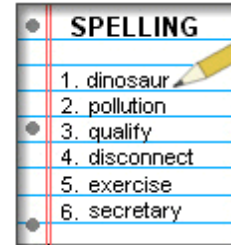
Reading and writing

Reading: frequently listening to and reading to
questioning
discussing their ideas
becoming a library member



Writing: keeping diaries
letter writing/emailing family and friends
'fun writing' using coloured pencils or different
writing implements
'play' with words

Spellings



SPELLING	
1.	dinosaur
2.	pollution
3.	quality
4.	disconnect
5.	exercise
6.	secretary

Spellings will be given on Monday, ready for 'checking' in class on Friday. This term's spellings are all on the website.

<https://www.ethelbert-road.kent.sch.uk/spellings-18/>

Ways in which you can support your child's spelling skills and ability by:

- Practising the spelling of common exception words
- Crosswords/word puzzles
- Playing scrabble/boggle/hangman
- Shopping lists
- Playing games on www.spellingframe.co.uk

Maths

Play board games such as Monopoly, Ludo, Backgammon, Shut the Box, card games, Sudoku, etc.

Encourage your child to be involved with cooking (weighing and measuring) and shopping (using money).



Talk about time! Plan events together to help your child to work out timings.

Homework

Reading

At least fifteen minutes each day.

Spellings

Spellings will be put on the website each Monday and checked in a school on Fridays.

Maths

Children will receive maths homework related to the week's learning on a Wednesday to be completed by Monday. Children are welcome to hand it in before Monday.

Home Learning Projects

These will link with our topics. We aim to set three per year.

P.E.

- ▶ Our games session is on a Monday afternoon. We hope to go over to the Abbey as much as possible before winter.
- ▶ Our gym session is on a Thursday afternoon.
- ▶ Please send the children to school in their PE kit on PE days.
- ▶ Please ensure that you child has removed their ear rings or is able to do that before PE.

P.H.S.E

Our PSHE scheme covers Health and Wellbeing, Relationships and Living in the Wider World.

Please take the time to read the 'Parent's Document' on our PSHE page to familiarise yourselves with the content that will be delivered to your children.

<https://www.ethelbert-road.kent.sch.uk/lifewise-scheme/>

Online safety

Our children are growing up in a world which is becoming more and more dependent on and accustomed to the digital world. Technology is such a big part of our lives now; there's no escaping it and there are many positives that we can gain from it so long as we can navigate it properly. This is why it is crucial that we help our children to learn how to safely participate!

Think of online safety in the same way you would road safety, we wouldn't tell our children that they should never cross a road or even go near a road but we teach them strategies: listen out for vehicles, look both ways. When they are tiny, children will be carried. As they get older, they will hold a grown-up's hand and eventually, they will cross independently, assessing the risks and using the strategies they've learned.



Online safety

The e-safety page on our school website (<https://www.ethelbert-road.kent.sch.uk/e-safety/>) details how we ensure we are keeping your children safe in school.

However, there are many resources available to support parents with teaching online safety at home, including some useful resources that help with filtering and parental controls as well as advice on communication with your children about their online experiences.

<https://www.internetmatters.org/>

<https://www.ceopeducation.co.uk/parents/>

<https://www.nspcc.org.uk/keeping-children-safe/online-safety/talking-child-online-safety/>

<https://saferinternet.org.uk/guide-and-resource/parents-and-carers>

Mobile phones and smart tech

Please take some time to read our mobile phone and smart technology policy.

If your child brings a phone to school, the child and parent must know the code of conduct and sign appendix



Mobile Phone and Smart Technology Policy

Together We Thrive

Reviewed	July 2025	
Next Review	July 2027 Or as appropriate	
Headteacher	Michele Kirkbride	Date: 3 rd July 2025

SEND

SEND stands for Special Educational Needs and Disability. Our SENCo (SEN Co-Ordinator) is Mrs Vitiello.

At Ethelbert Road, we constantly monitor the progress and attainment of all pupils. Most pupils make good progress on their learning journey from EYFS to year 6 through our high-quality day to day teaching and our normal provision, following the Mainstream Core Standards (a framework to support pupils with SEND).

Most children need some level of additional support whilst at school and you will be informed and kept updated if this is the case for your child.

If you have concerns about your child and wish to discuss this further, please speak to me and we can arrange a meeting (if you wish). I will consult with Mrs Vitiello and will arrange further meetings where appropriate.

If your child has a Special Educational Need they will be placed on the SEN register after a discussion with parents/ carers.

For more information about our SEN provision, including the Mainstream Core Standards and relevant policies, visit our website on <https://www.ethelbert-road.kent.sch.uk/special-educational-needs-and-disability/>.

Targeted support

We have spent the first few weeks of term getting to know your children and have been assessing for any additional support. If your child has been chosen to have targeted support in any areas, I will share this with you soon.

Class page

Welcome to Green Class

A Study of South America and The Amazon Rainforest



Communication

Communication is really essential. If there is important information which the class teacher needs to know, please let the office know via email, email the class email address or write a note.

If there is something urgent which you need to talk about, the staff in the school office will always try to find someone who can help you if the class teacher is teaching.

If what you need to speak about requires a longer discussion, please email to arrange a mutually convenient time with the class teacher.

If you would like to talk to someone in confidence about a safeguarding issue or family circumstances, please speak to Mrs Kirkbride who is our Designated Safeguarding Lead. In her absence, please speak to Mrs Vitiello or Mrs Cornall who are the Deputy Designated Safeguarding Officers.

Email me at...

y5@ethelbert-road.kent.sch.uk

Each year group has their own email address to help parents communicate with their child's teacher. Please note that the teachers will check their emails Monday-Friday between 3:30-4:00pm. Due to the teacher's workload, we may not be able to respond on the same day, however please be reassured they will get back to you as soon as possible. If you have an urgent issue, please contact school via the school office.

Please continue to email the office with any absence/holiday/medical issues and general enquiries.

CATS

In term 4, the children will have the opportunity to take Cognitive Ability Tests. We will share their results with you before the Kent Test registration window opens in June.

Kent Test 2026

- Registration for the Kent Test normally opens in June. If you want your child to sit the Kent Test. You must register your child during this window.
- The Kent Test will take place in early September 2026
- It currently comprises of a Mathematics and English Paper, a Reasoning Paper and a writing exercise.
- A printable example of the papers can be found on:
- <http://www.kent.gov.uk/secondaryadmissions>

Year 6 Residential

We will keep you up to date in the school newsletter and via the class page.

Green Class 2025 -2026



Meet the teachers



Contact us



Curriculum



Reading



Homework



Gallery



Understanding year 5 CATs



Kent Test 2026



Year 6 Residential

Other Websites & Activities



English



Maths



Science



Others

Can you help us?

Do you have any talents you can share with us or any expertise our children could learn from?

Do you have any time where you could help out by being a volunteer reader, be part of the school fundraising groups or support in any other way?

Please let me know if you can help out in any way!

Any Questions?